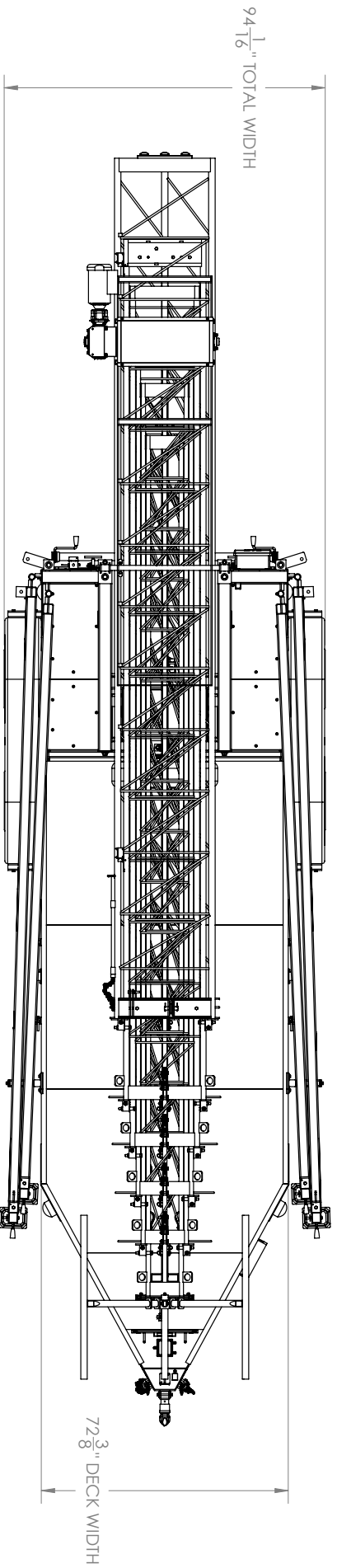


**PROPRIETARY AND CONFIDENTIAL**  
 THE INFORMATION CONTAINED IN THIS DRAWING IS THE SOLE PROPERTY OF ALLTECH COMMUNICATIONS, LLC. ANY REPRODUCTION IN PART OR AS A WHOLE WITHOUT THE WRITTEN PERMISSION OF ALLTECH COMMUNICATIONS, LLC IS PROHIBITED.

UNLESS OTHERWISE SPECIFIED:	NAME	DATE	<b>Alltech Communications, LLC</b> 10 E. 3rd St., Ste 300 - Tulsa, OK 74103 TITLE:
DIMENSIONS ARE IN INCHES	DRAWN	8/18/14	
TOLERANCES:	CHECKED		
FRAC TIONAL: $\pm 1/16"$	ENG APPR.		
ANGULAR MATCH: $2^\circ$ BEND: $\pm 2^\circ$	MFG APPR.		SIZE DWG. NO. <b>B ATC106</b>
THREE PLACE DECIMAL: $\pm .005"$	Q.A.		SCALE: 1:30 WEIGHT: SHEET 2 OF 5
INTERFERE/GEOMETRIC TOLERANCES PER: MATERIAL	COMMENTS:		PASSENGERS SIDE VIEW
FINISH			REV
DO NOT SCALE DRAWING			
USED ON			
NEXT ASSY			
APPLICATION			

8 7 6 5 4 3 2 1



94 <sup>1</sup>/<sub>16</sub>" TOTAL WIDTH

72 <sup>3</sup>/<sub>8</sub>" DECK WIDTH

**PROPRIETARY AND CONFIDENTIAL**  
 THE INFORMATION CONTAINED IN THIS DRAWING IS THE SOLE PROPERTY OF ALLTECH COMMUNICATIONS, LLC. ANY REPRODUCTION IN PART OR AS A WHOLE WITHOUT THE WRITTEN PERMISSION OF ALLTECH COMMUNICATIONS, LLC IS PROHIBITED.

UNLESS OTHERWISE SPECIFIED:	NAME	DATE	Alltech Communications, LLC 10 E. 3rd St., Ste. 300 - Tulsa, OK 74103	
DIMENSIONS ARE IN INCHES	DRAWN	8/18/14	TITLE:	
TOLERANCES:	CHECKED			
FRAC TIONAL: $\pm 1/16$ "	ENG APPR.			
ANGULAR MATCH: 2° BEND: $\pm 2$ "	MFG APPR.			
THREE PLACE DECIMAL: $\pm .005$ "	Q.A.			
INTERPRET GEOMETRIC TOLERANCES PER MATERIAL	COMMENTS:			
	TOP VIEW		SIZE DWG. NO.	REV
			<b>B</b> ATC106	
			SCALE: 1:30 WEIGHT:	SHEET 3 OF 5

NEST ASSY	USED ON	FINISH	DO NOT SCALE DRAWING
		RINSH	

APPLICATION	FINISH	DO NOT SCALE DRAWING

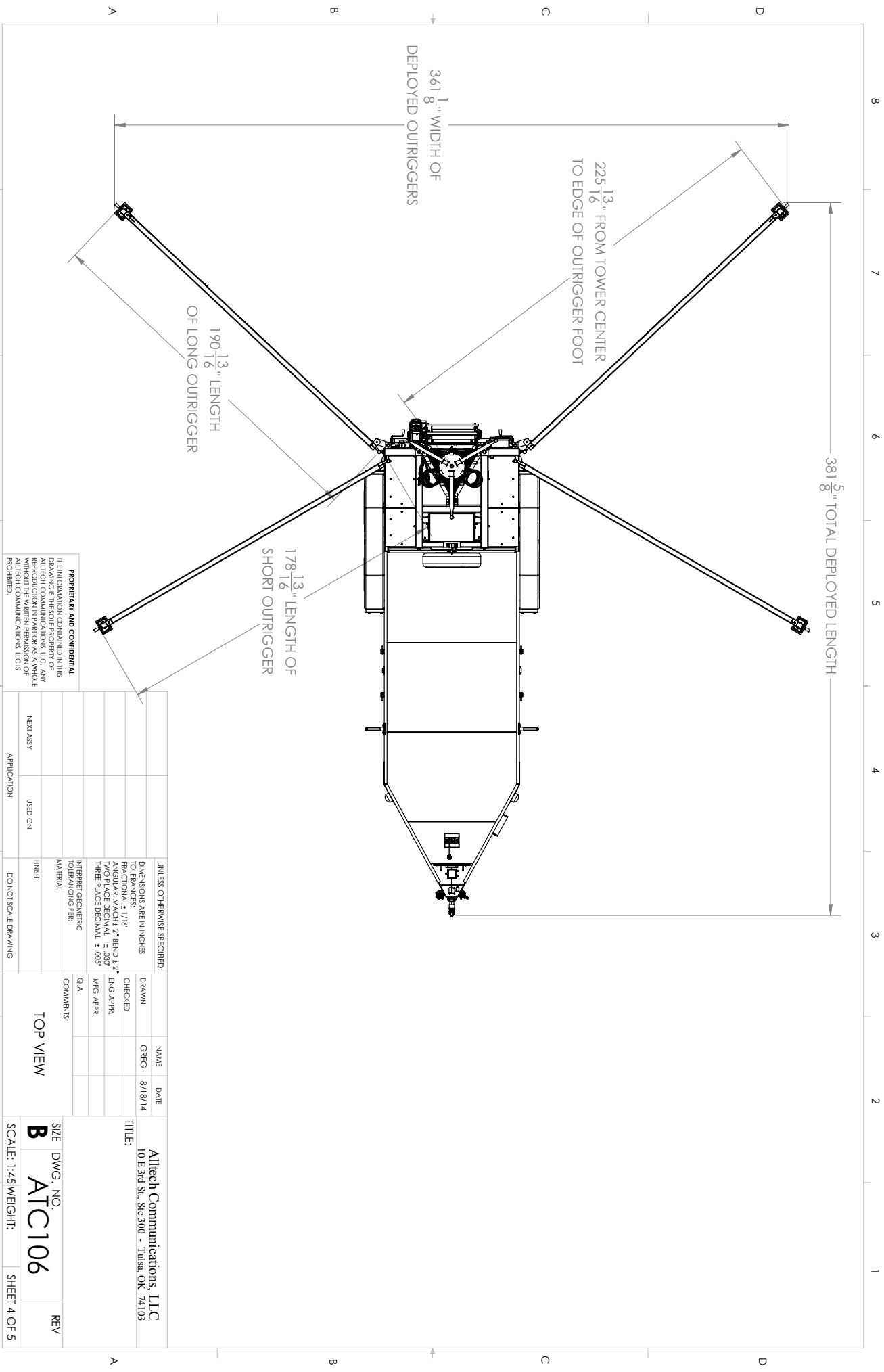
APPLICATION	FINISH	DO NOT SCALE DRAWING

APPLICATION	FINISH	DO NOT SCALE DRAWING

8 7 6 5 4 3 2 1

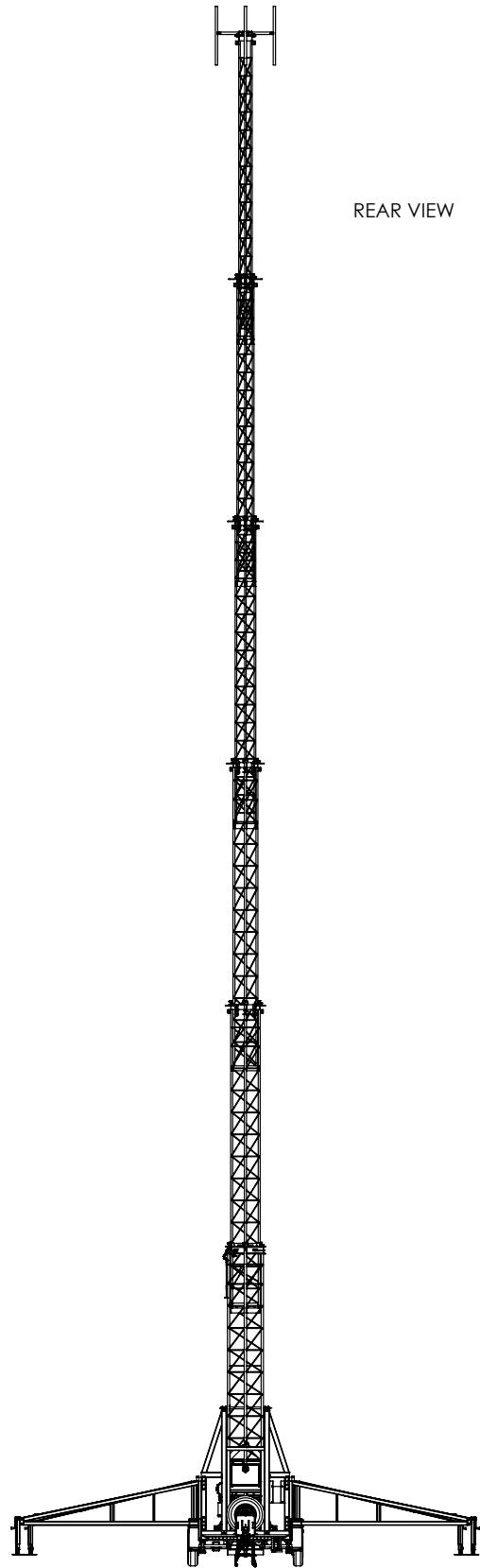
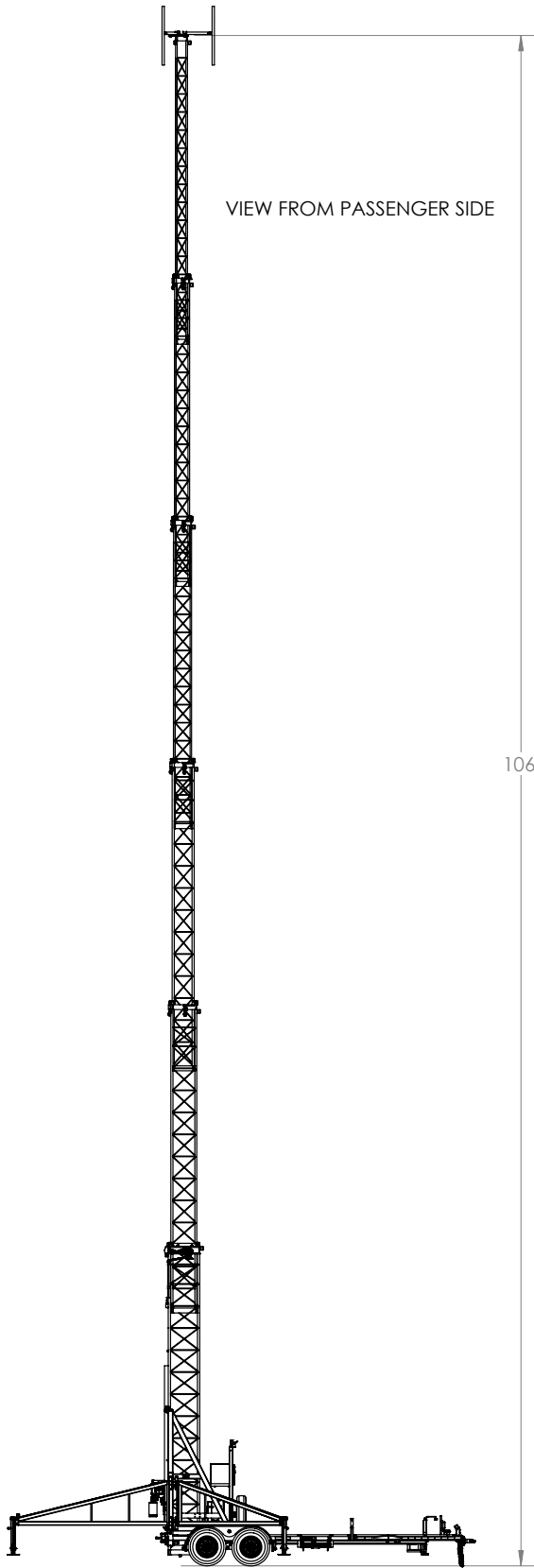
A B C D

A B C D



**PROPRIETARY AND CONFIDENTIAL**  
 THE INFORMATION CONTAINED IN THIS DRAWING IS THE SOLE PROPERTY OF ALLTECH COMMUNICATIONS, LLC. ANY REPRODUCTION IN PART OR AS A WHOLE WITHOUT THE WRITTEN PERMISSION OF ALLTECH COMMUNICATIONS, LLC IS PROHIBITED.

UNLESS OTHERWISE SPECIFIED: DIMENSIONS ARE IN INCHES TOLERANCES: FRACTIONAL: ± 1/16" ANGULAR: MATCH ± 2° BEND ± 2° THREE PLACE DECIMAL: ± .005" INTERFERE/GEOMETRIC TOLERANCES PER MATERIAL	DRAWN GREG	DATE 8/18/14	NAME GREG	ALLTECH COMMUNICATIONS, LLC 10 E 3rd St., Ste 300 - Tulsa, OK 74103
NEET ASSY	USED ON	FINISH	COMMENTS: O.A.	TITLE: 10 E 3rd St., Ste 300 - Tulsa, OK 74103
APPLICATION	USED ON	DO NOT SCALE DRAWING	TOP VIEW	SIZE: DWG. NO. <b>B</b> SCALE: 1:45 WEIGHT: <b>ATC106</b>
				REV
				SHEET 4 OF 5



		UNLESS OTHERWISE SPECIFIED:	NAME	DATE
		DIMENSIONS ARE IN INCHES	DRAWN	GREG 8/18/14
		TOLERANCES:	CHECKED	
		FRACTIONAL $\pm 1/16"$	ENG APPR.	
		ANGULAR: MACH $\pm 2"$ BEND $\pm 2"$	MFG APPR.	
		TWO PLACE DECIMAL $\pm .030"$	Q.A.	
		THREE PLACE DECIMAL $\pm .005"$	COMMENTS:	
		INTERPRET GEOMETRIC TOLERANCING PER:		
		MATERIAL		
		FINISH		
NEXT ASSY	USED ON			
	APPLICATION	DO NOT SCALE DRAWING		

Alltech Communications, LLC 10 E 3rd St., Ste 300 - Tulsa, OK 74103			
TITLE:			
SIZE	DWG. NO.	REV	
<b>B</b>	<b>ATC106</b>		
SCALE: 1:96	WEIGHT:	SHEET 5 OF 5	

**PROPRIETARY AND CONFIDENTIAL**  
THE INFORMATION CONTAINED IN THIS DRAWING IS THE SOLE PROPERTY OF ALLTECH COMMUNICATIONS, LLC. ANY REPRODUCTION IN PART OR AS A WHOLE WITHOUT THE WRITTEN PERMISSION OF ALLTECH COMMUNICATIONS, LLC IS PROHIBITED.